

Make your own Locomotion 1



Using only these materials....

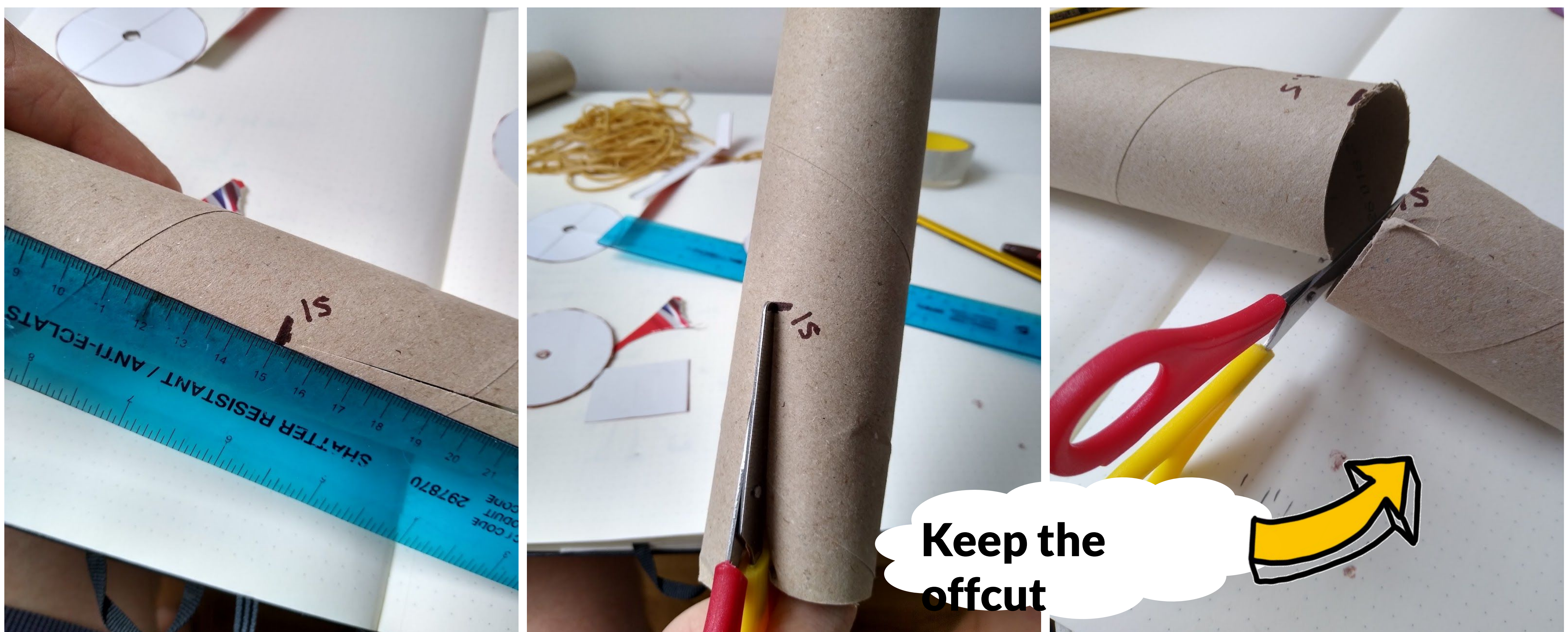


Make your own Locomotion 1

- 1 Materials and tools** - Tape, cardboard tube, pencil, felt tip, scissors, paper drinking straw and card from the recycling bin.



- 2 Measure 15 cm along the cardboard tube** - then cut lengthways and

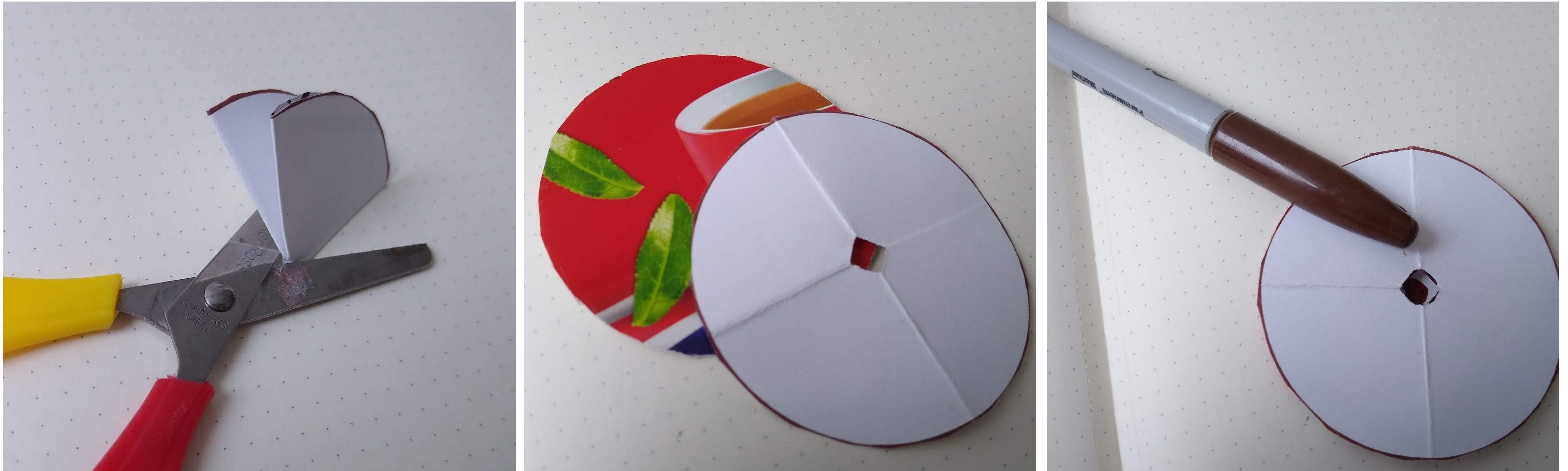


- 3 On a piece of card from recycling trace around the inside of the tape 5 times** - Then cut them out, four will be the wheels. Fold one circle into quarters

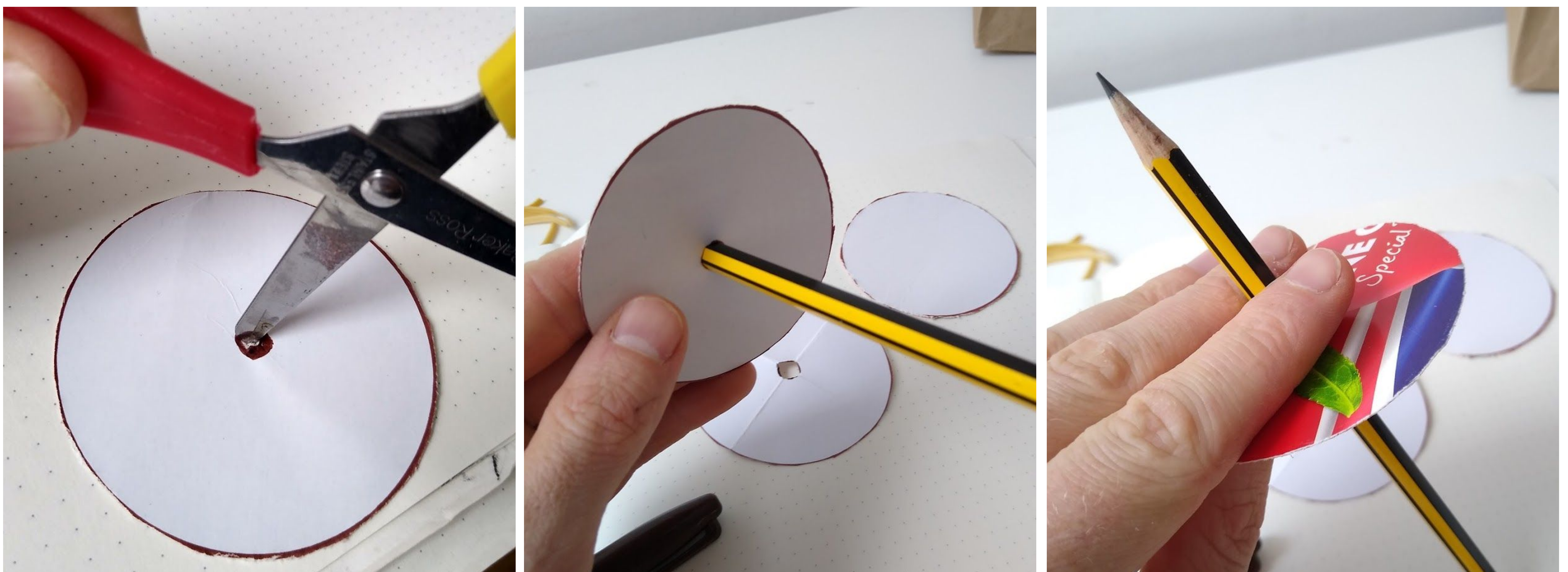


Make your own Locomotion 1

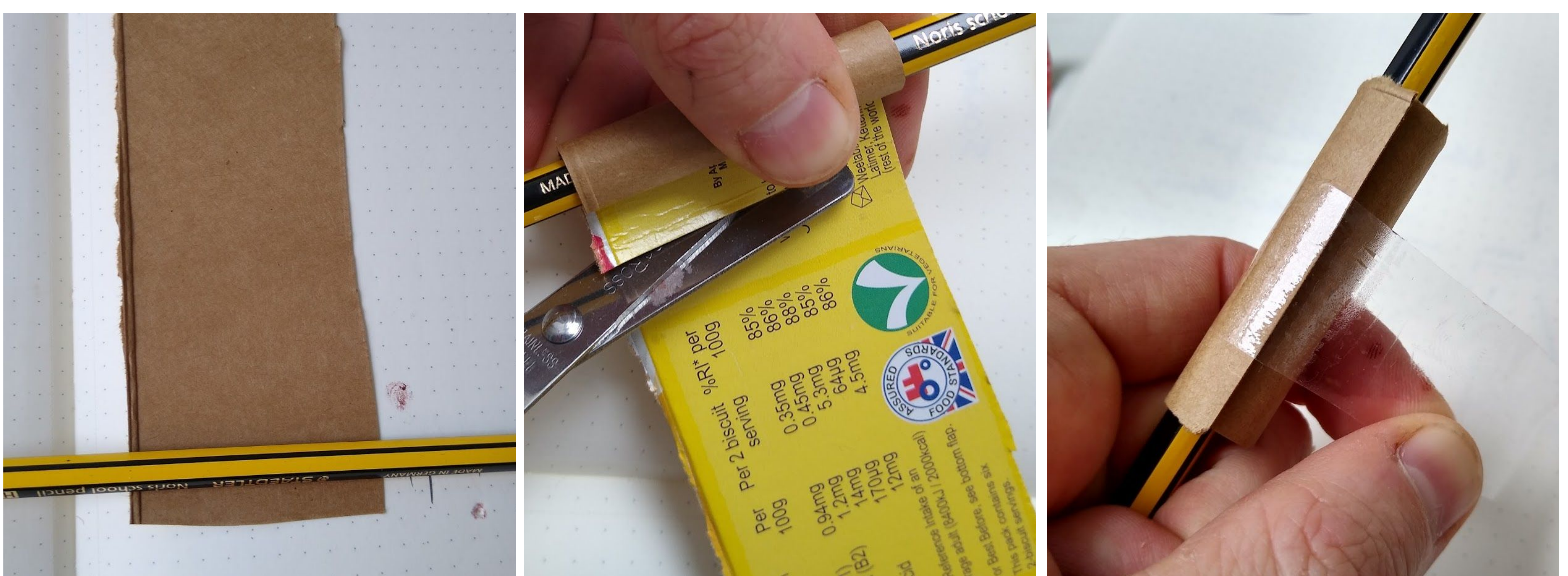
- 4** **Cut the tip off the template** - then draw a dot in the middle of the wheels



- 5** **On a table with card underneath, twist the tip of your scissors on the dot**
Gently widen the hole with your pencil. Twist through holding with your fingers



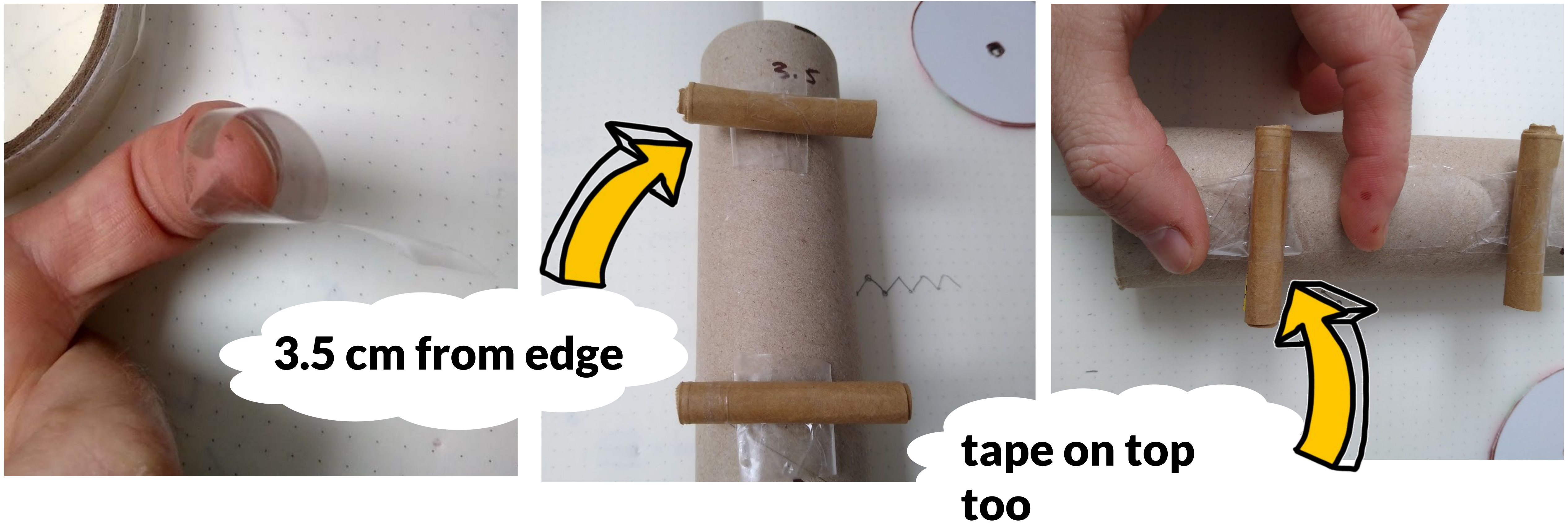
- 6** **Now we need to make a tube for the axel** - cut a piece of cereal box to the width of the tube the roll it tightly around a pencil and then tape. Cut off extra.



Make your own Locomotion 1

7

Wrap tape around your finger, sticky side facing out - then stick on the tubes



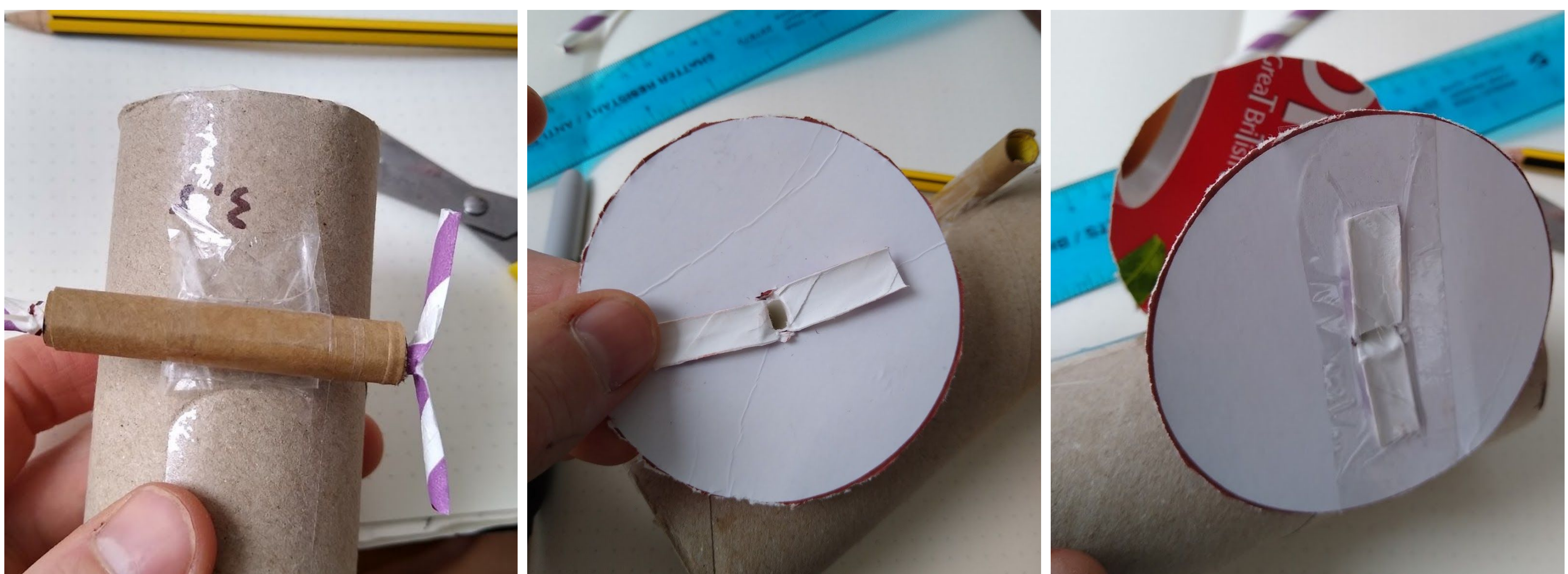
8

Cut the straw in half, pinch both ends flat - then snip down the flat side



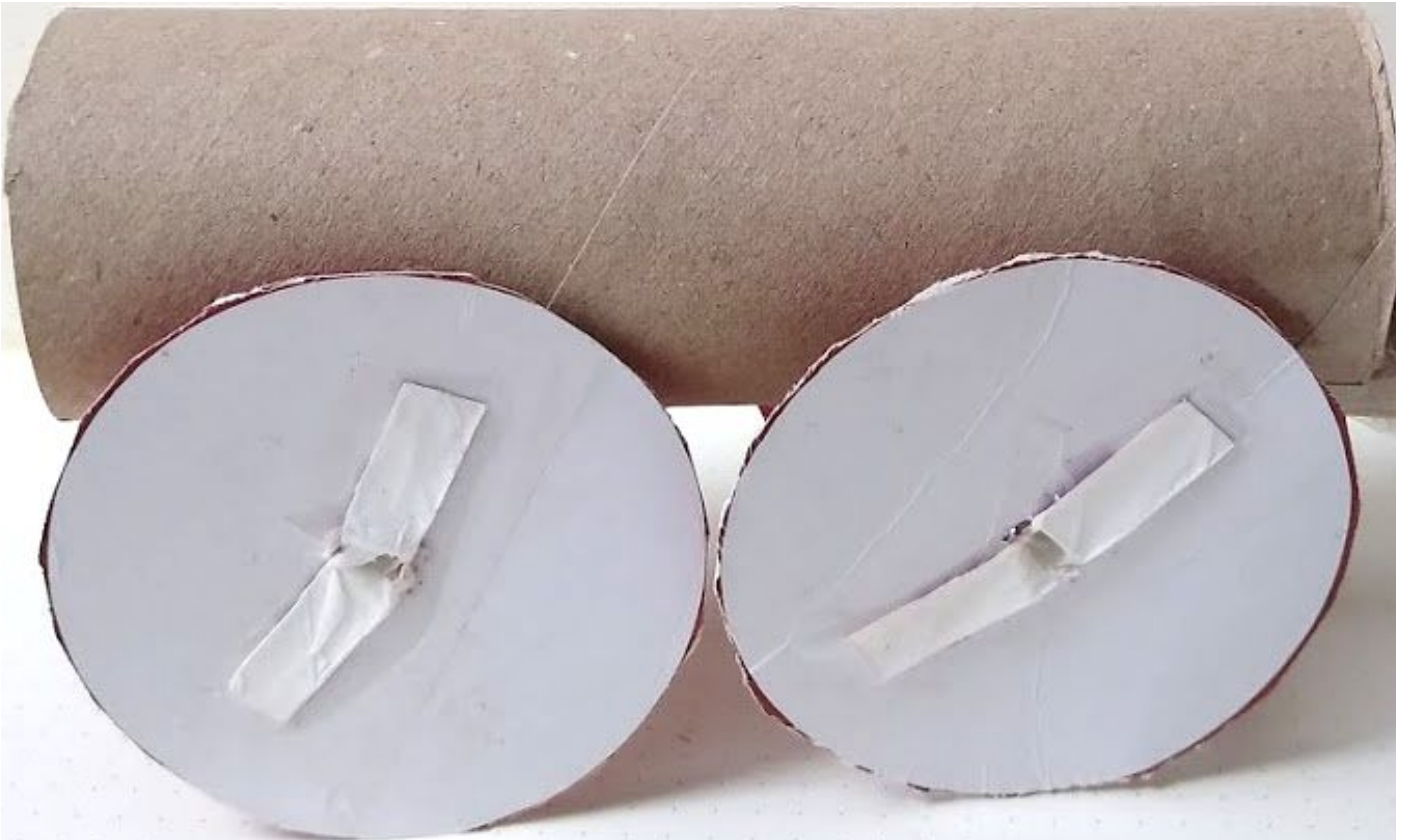
9

Poke the straw through the tube and the wheel - tape in place and repeat x4!

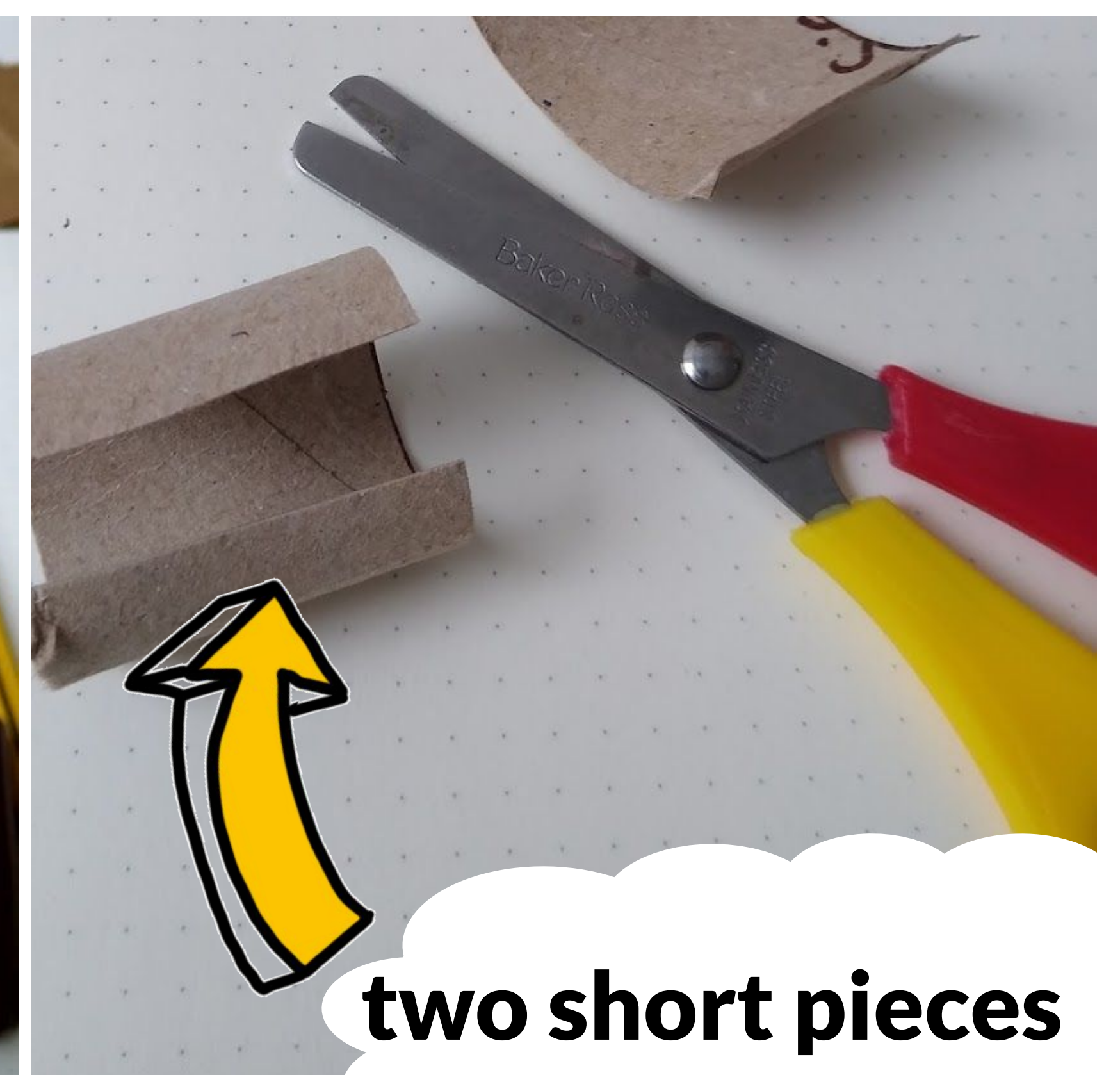
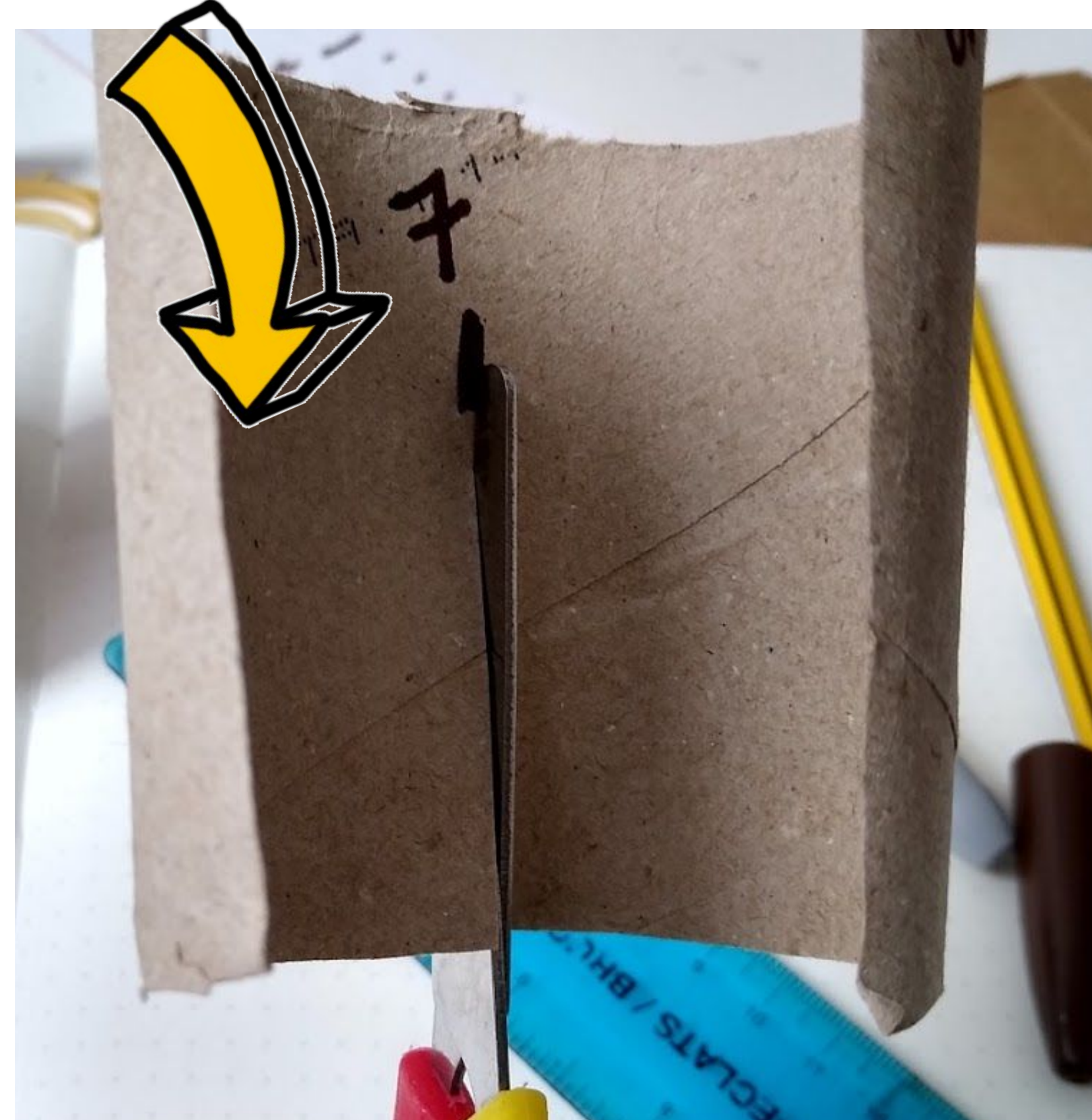
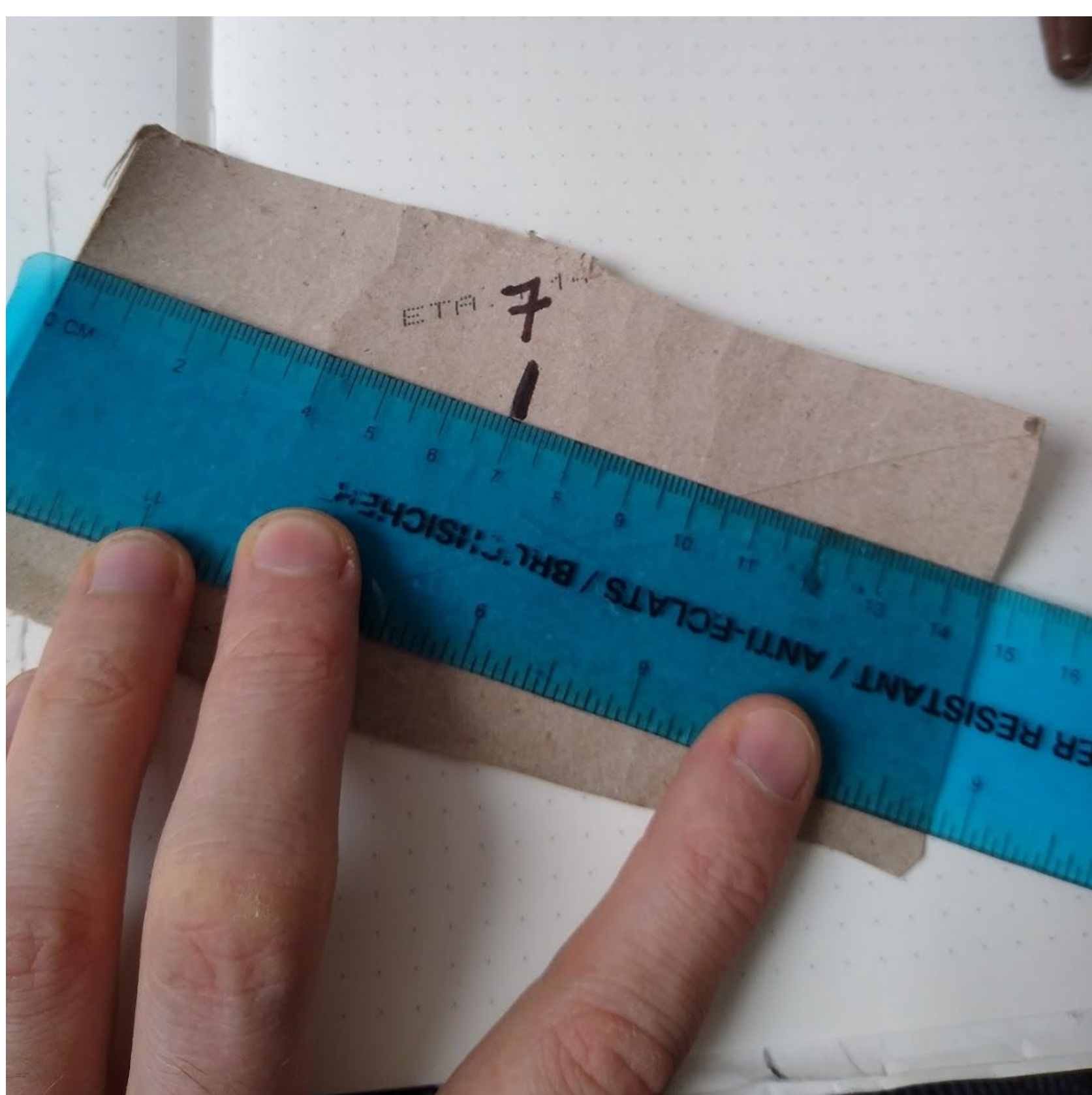


Make your own Locomotion 1

- 10** Your locomotion base is now complete - how far can it roll along the floor?



- 11** Next is the chimney - cut the off cut in half and half again. You will have two short pieces and **one long piece**



- 12** Tape the 3 pieces into tubes - tape them together, use your finger as a guide!



Make your own Locomotion 1

- 13** **Cut two slits in the chimney base** - then slot and tape it to the underside.



- 14** **Finish off by decorating** - we stuck brown card over the wheels and added a spikey rim for the chimney. How will you add to your Locomotion 1?

